



Join Maryland Community for LifeSM
today to enjoy your independence for
many tomorrows to come.

Core Services:

- Home Maintenance
- Service Navigation
- Transportation



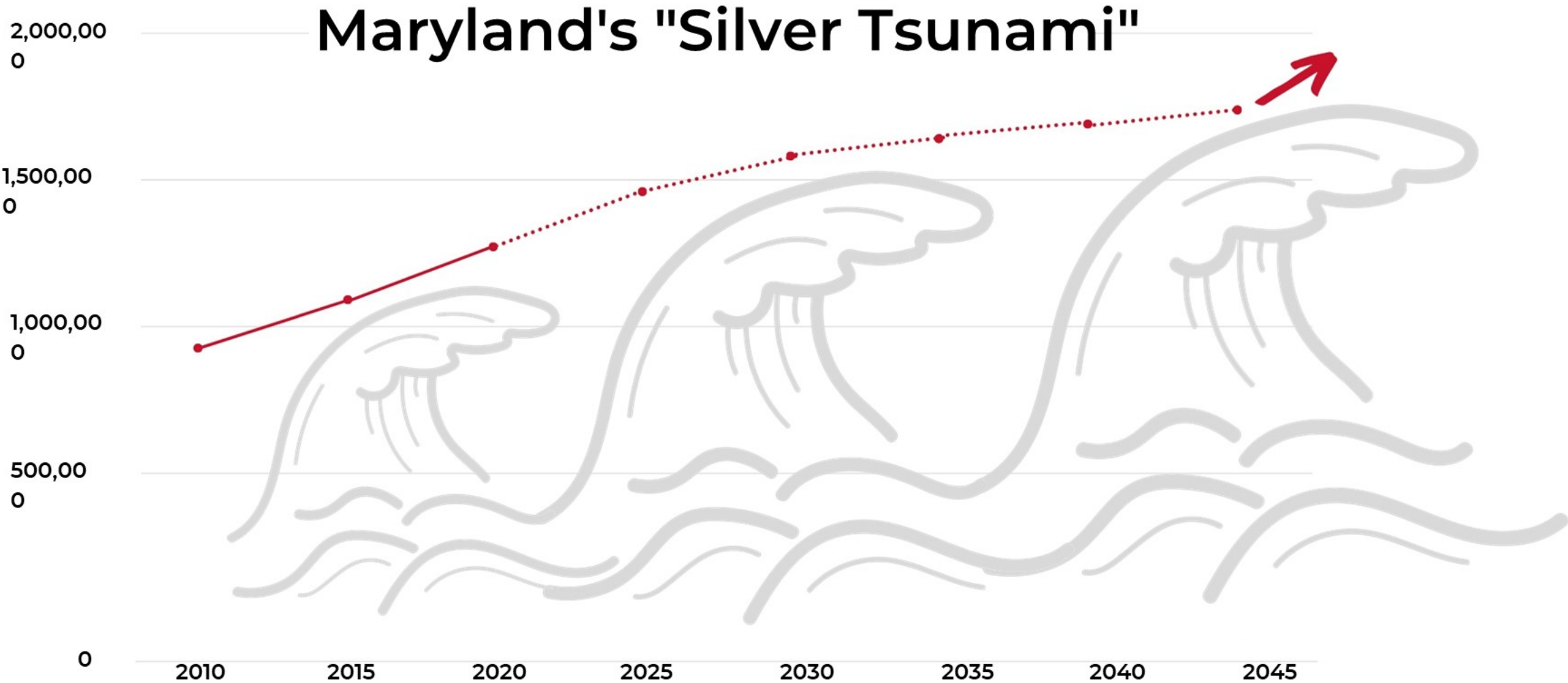
Larry Hogan | Governor
Boyd K. Rutherford | Lt. Governor
Rona E. Kramer | Secretary



1-800-243-3425 aging.maryland.gov

Senior Population Increase

— Actuals
... Projections





Helping Maryland Residents to Age at Home



Community for LifeSM Features

- For adults age 60+
- No health *or* income qualification
- Offering non-medical core services and support for aging at home
- Prevents the need for costly long-term care



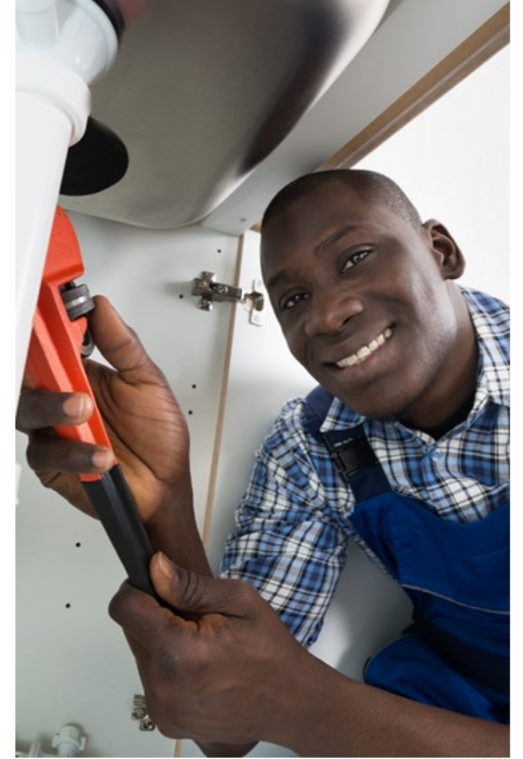


Core Services of Community for LifeSM

Home Maintenance



- Initial home safety assessment
 - ✓ Check for environmental hazards
 - ✓ Safety assessment
 - Door locks
 - Windows
- Handyman services
- Vetted contractors and assistance with contract review for major repairs



Service Navigator



- Warm, frequent, proactive contact with members
- Information and assistance in obtaining all local activities and link to local resources for services in the community
- Prevent isolation and provide one-on-one personal contact
- Advice and oversight to prevent fraud



Transportation



- Run errands
- Get to the doctor or pharmacy visits
- Go shopping
- Visit family
- Attend social activities
- Prevent isolation



COST COMPARISON

Which would **you** prefer?

NURSING HOME



Your Monthly Cost*
(Semi-Private Room)
\$10,667

ASSISTED LIVING



Your Monthly Cost*
\$5,000

COMMUNITY FOR LIFESM STAY IN YOUR HOME



Monthly Cost**
\$250.00

*Source: Genworth 2020 Survey of Maryland Median Costs

**Source: Based on current available options, MDoA. Cost varies by CFLSM partner. (10/2021)

Community for LifeSM providing services in:

- Allegany County
- Anne Arundel County
- Northern Baltimore City
- Baltimore County
- Caroline County
- Frederick County
- Talbot County
- Montgomery County
- Washington County
- Wicomico County
- Worcester County



Contact the Maryland Department of Aging to become a
CFLSM provider.



The "key" to at home independence

